









A wonderful two bedroom end terraced cottage sitting on a lovely Local Authority maintained green in a quiet position perfect for those who require all accommodation on the ground floor.

Available with immediate vacant possession, the property internally comprises reception hall, lounge, kitchen, two bedrooms and a bathroom whilst externally there are gardens to the front and side together with a south facing seating area to the rear. Internal inspection highly recommended!

MAIN ROOMS AND DIMENSIONS

All on Ground Floor

Access via UPVC French patio doors.

Entrance Porch



Inner UPVC door to hall.

Entrance Hall



Storage cupboard, radiator and access point to loft.

Lounge 11'0" x 14'6"



Double glazed bay window to front, double glazed window side, double radiator and feature fireplace.

Kitchen 10'4" x 6'2"



Range of wall and base units with countertops over incorporating a single bowl sink and drainer with mixer tap. Integrated oven, electric hob and hood. Space for fridge freezer. Radiator, double glazed window and UPVC door to rear.

Bedroom 1 10'3" x 10'7"



Double glazed window to front, radiator and built in sliding door wardrobes.

Bedroom 2 6'4" x 11'5"



Double glazed window and radiator.

Bathroom 7'1" x 5'6"



Low level WC and washbasin vanity unit, bath with shower over, radiator and double glazed window to rear.

Outside



Gardens to the front and side together with a south facing seating area to the rear.

Council Tax Band

The Council Tax Band is Band A.

Tenure Freehold

We are advised by the Vendors that the property is Freehold. Any prospective purchaser should clarify this with their Solicitor.

Visit www.peterheron.co.uk or call 0191 510 3323

Tried. Trusted. Recommended. City Branch 20 Fawcett Street Sunderland SR1 1RH Fulwell Branch 15 Sea Road Fulwell Sunderland SR6 9BS

MAIN ROOMS AND DIMENSIONS

Important Notice - Particulars

Peter Heron Ltd for themselves and for the vendors of this property whose agents they are, give notice that:-
 The particulars are set out for general guidance only for the intending Purchasers and do not constitute part of an offer or contract. Whilst we endeavour to make our sales particulars accurate and reliable, if there is anything of particular importance which you feel may influence your decision to purchase, please contact the office and we will be pleased to check the information. Do so particularly, if contemplating travelling some distance to view the property. All descriptions, dimensions, references to conditions and necessary permissions for use and occupation and other details are given in good faith, and are believed to be correct, however any intending purchasers should not rely on them that statements are representations of fact, but must satisfy themselves by inspection or otherwise as to the correctness of each of them. Independent property size verification is recommended.

Lease details, service charges and ground rent (where applicable) are given as a guide only and should be checked and confirmed by your Solicitor prior to exchange of contracts. No person in the employment of Peter Heron Ltd has any authority to make or give any representation or warranty whatever in relation to this property or these particulars, nor to enter into any contract on behalf of Peter Heron Ltd, nor into any contract on behalf of the Vendor. The copyright of all details and photographs remain exclusive to Peter Heron Ltd.

Please note that in the event the purchaser uses the services of Peter Heron Conveyancing in the purchase of their home, Peter Heron Ltd will be paid a completion commission of £300.00 by Movewithus Ltd.

Sea Road Viewings

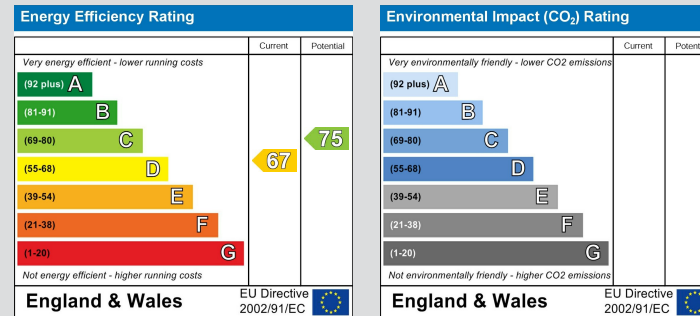
To arrange an appointment to view this property please contact our Sea Road branch on 0191 510 6116 or book viewing online at peterheron.co.uk

Opening Times

Monday to Friday 9.00am - 5.00pm Saturday 9.00am - 12noon

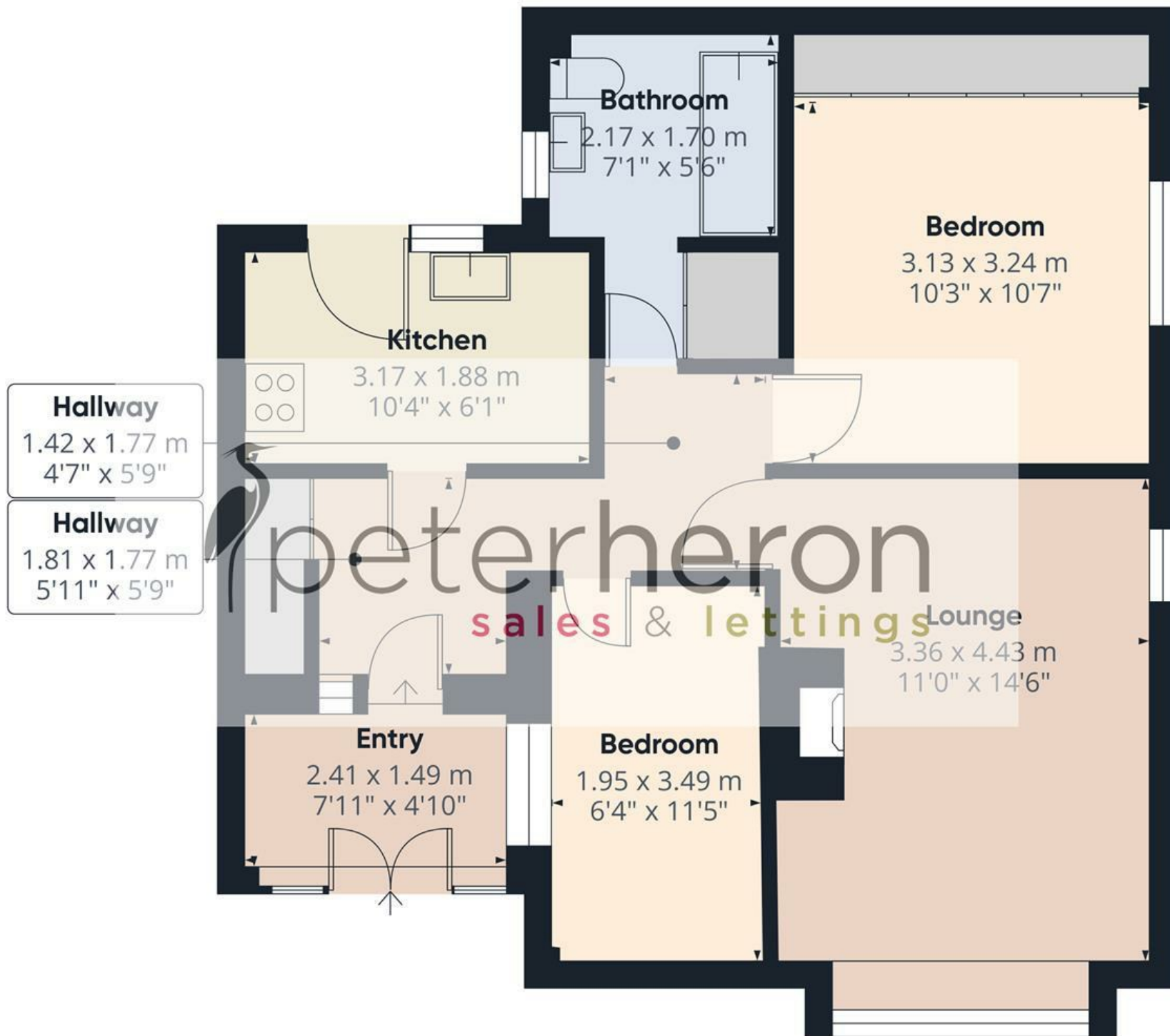
Ombudsman

Peter Heron Estate Agents are members of The Property Ombudsman and subscribe to The Property Ombudsman Code of Practice.



Visit www.peterheron.co.uk or call 0191 510 3323

Tried. Trusted. Recommended. City Branch 20 Fawcett Street Sunderland SR1 1RH Fulwell Branch 15 Sea Road Fulwell Sunderland SR6 9BS



Approximate total area⁽¹⁾

57.3 m²
619 ft²

(1) Excluding balconies and terraces

Calculations reference the RICS IPMS 3C standard. Measurements are approximate and not to scale. This floor plan is intended for illustration only.

